



6<sup>th</sup> International  
Charcot-Marie-Tooth  
and Related Neuropathy  
Consortium  
(CMTR) Meeting

8-10 September 2016

[www.theoffice.it/cmtr2016](http://www.theoffice.it/cmtr2016)

VENICE-MESTRE,  
NH LAGUNA PALACE  
ITALY

Organizing Secretariat  
the office srl  
email [cmtr2016@theoffice.it](mailto:cmtr2016@theoffice.it)

## LOCAL ORGANIZING COMMITTEE

### Coordinators

Davide Pareyson  
Angelo Schenone  
Gian Maria Fabrizi

Emily Bellone  
Chiara Briani  
Roberto Eleopra  
Fiore Manganelli  
Maria Giovanna Marrosu  
Anna Mazzeo  
Isabella Moroni  
Luca Padua  
Francesco Paladin  
Stefano Previtali  
Rocco Quatralè  
Aldo Quattrone  
Franco Taroni

## BOARD of PNS Peripheral Nerve Society

**President** Mary M. Reilly  
**President Elect** Steven S. Scherer  
**Secretary/Treasurer** David R. Cornblath

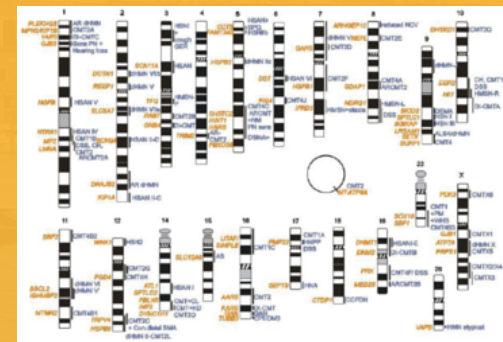
### Board Members

David Adams  
Alessandra Bolino  
Chiara Briani  
David R. Cornblath  
Christopher Klein  
Michael P.T. Lunn  
Davide Pareyson  
Mary M. Reilly  
Steve S. Scherer  
Nobuhiro Yuki

## SCIENTIFIC COMMITTEE

Mike Shy (US)  
Mary Reilly (UK)  
Vincent Timmerman (Belgium)  
Steve Scherer (US)  
Davide Pareyson (Italy)  
Angelo Schenone (Italy)  
David Adams (France)  
Giuseppe Lauria (Italy)

Alessandra Bolino (Italy)  
Francesc Palau (Spain)  
Michaela Auer-Grumbach (Austria)  
Michael Sereda (Germany)  
Pavel Seeman (Czech)  
Stephan Zuchner (US)  
John Svaren (US)  
Lawrence Wrabetz (US)  
Garth Nicholson (Australia)  
Joshua Burns (Australia)  
Wilson Marques (Brazil)  
Byung-Ok Choi (Korea)  
Kelly Monk (US)



A scenic view of a Venetian canal with gondolas and buildings, overlaid with a large orange graphic that has a pointed bottom. The text is centered on the graphic.

# IMPORTANT DATES

---

## PRELIMINARY PROGRAMME



# IMPORTANT DATES

## REGISTRATIONS & ABSTRACT SUBMISSION OPENING

1 MARCH 2016

## ABSTRACT SUBMISSION DEADLINE

30 APRIL 2016

## ABSTRACT ACCEPTANCE

31 MAY 2016

## EARLY BIRD FEE DEADLINE

15 JUNE 2016

---

## THURSDAY, SEPTEMBER 8, 2016

- 13.00 REGISTRATION
- 14.00 OPENING
- 14.15 FIRST LECTURE (Prof. Giampietro Schiavo, Modifying axonal transport as a therapeutic strategy in neuromuscular diseases)
- 15.00 PLATFORM
- 16.30 Coffee break
- 17.00 PLATFORM
- 18.00 POSTER SESSION
- 19.30 WELCOME COCKTAIL

---

## FRIDAY, SEPTEMBER 9, 2016

- 8.30 PLATFORM
- 10.30 Coffee break
- 11.00 PLATFORM
- 12.00 POSTER SESSION
- 13.00 LUNCH
- 14.00 PLATFORM
- 16.30 TRIP TO VENICE
- 20.15 GALA DINNER IN SAN SERVOLA

---

## SATURDAY, SEPTEMBER 10, 2016

- 8.30 SECOND LECTURE (Prof. Giampaolo Merlini, Unfolding transthyretin amyloidosis)
- 9.15 PLATFORM
- 11.00 Coffee break
- 11.30 POSTER SESSION
- 12.30 PLATFORM
- 13.30 LUNCH
- 14.30 PLATFORM / POSTER SESSION UNTIL THE END
- 16.30 Coffee break
- 19.00 CLOSING



# PRELIMINARY PROGRAMME

---



# CONGRESS

---

## VENUE



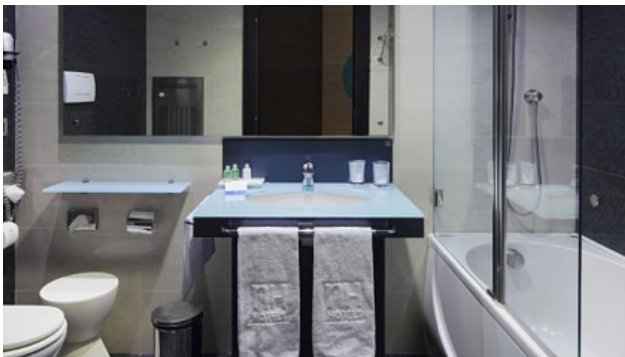
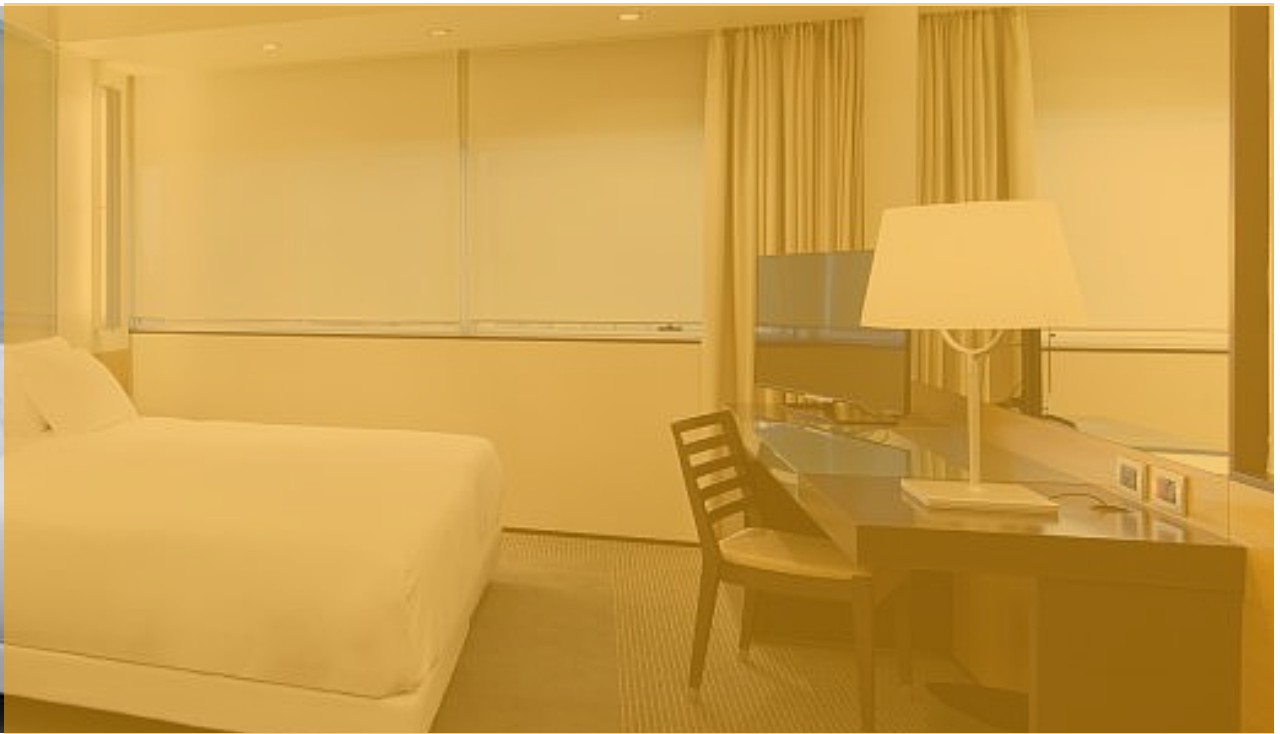
HOTEL

# NH LAGUNA PALACE



Viale Ancona 2  
30172 Venice Mestre  
Italy





ROOMS AT  
CONFERENCE SPECIAL RATES

TWIN ROOMS AVAILABLE





# HOW TO REACH CONFERENCE VENUE

**NH Laguna Palace Hotel**  
**Viale Ancona, 2, 30172 Mestre,**  
**Venezia (VE) Italy**



From the highway, follow the road signs for Venice to the railway bridge. Then turn left and follow the road signs for Via Torino, go straight on to traffic light. Turn right and go straight on for 500 mt.



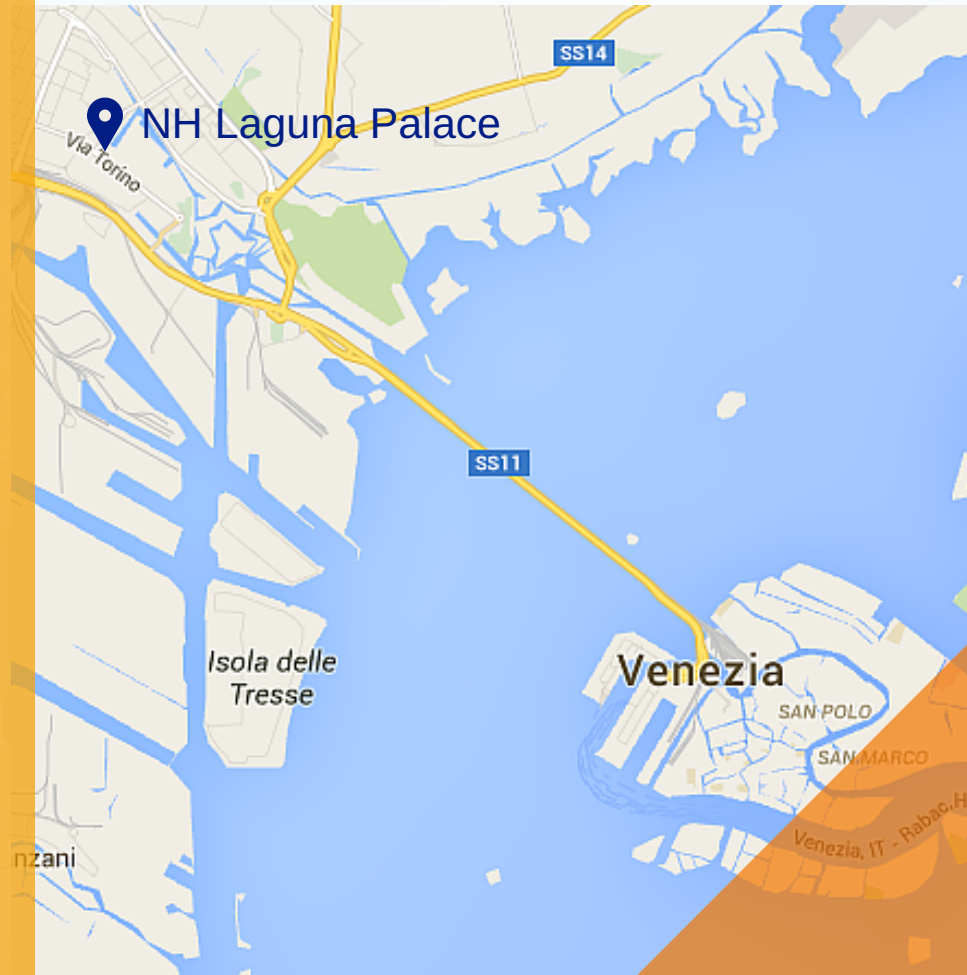
Distance from the railway station: 1.00km  
From the railway station Venezia-Mestre, you have two choices: by bus, number 31 or 32 (1 bus every 20 minutes - travel time: 15 minutes) or by taxi (travel time: 5 minutes, average cost Euro 8,00/10,00).



Distance from the airport: 12.00km  
From Venice airport you should take public transport: bus number 15 (the bus stop is 5 minutes walk away from the airport- 1 bus every 30 minutes- travel time: 35 minutes by bus and 20 minutes walking from the train station to the hotel) or ATVO Blue Bus: bus stop in front of the train station.

By taxi (average cost Euro 45,00/50,00)  
Taxi telephone number: +39 041 5964  
[www.radiotaxivenezia.com](http://www.radiotaxivenezia.com)

**GPS Coordinates**  
**Latitude:45.48148329147609**  
**Longitude:12.249197959899902**





# GALA DINNER

---

VENUE



# THE ISLAND OF SAN SERVOLO

